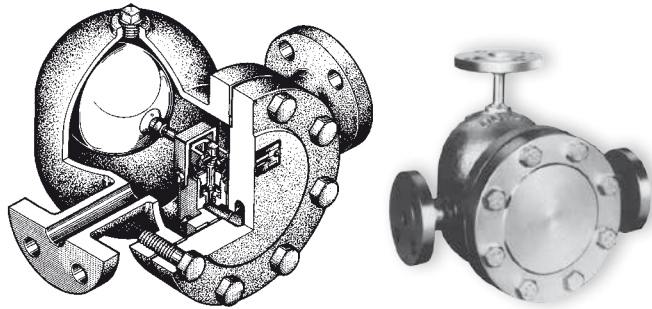
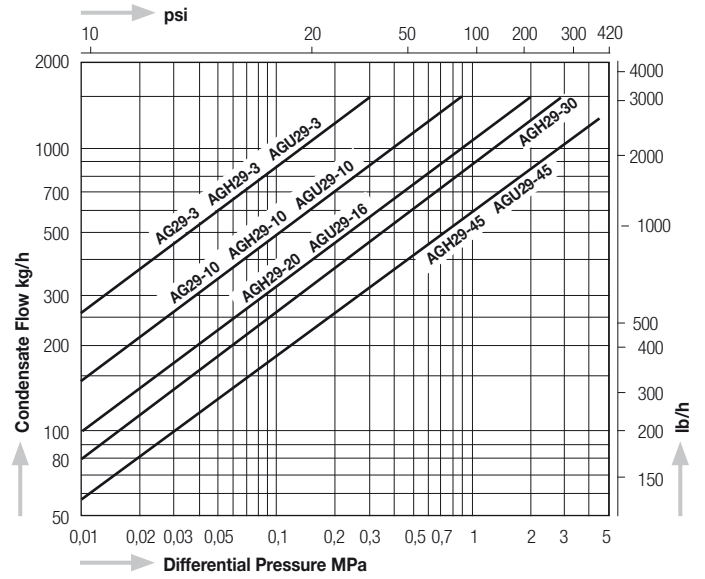


# AG29/AGH29



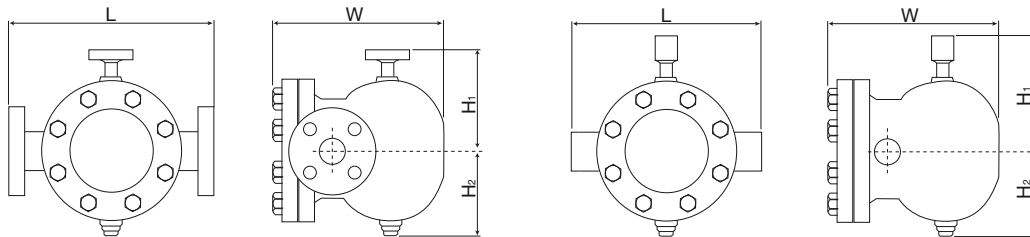
Capacity Chart AG29, AGH29, AGU29



Dimensions

AG29, AGH29, AGU29

AGH29W, AGU29W



Model	Connections	Size (in)	Max. Operating Pressure		Max. Operating Temperature		Dimensions (mm)				Dimensions (in)				Body Material	Weight	
			MPa	psig	°C	°F	L	H <sub>1</sub>	H <sub>2</sub>	W	L	H <sub>1</sub>	H <sub>2</sub>	W		kg	lb
AG29 - 3	Flanged JIS, ASME, DIN	½" - 1"	0,3	43	300	572	340	200	120	260	13.4	7.9	4.7	10.2	Ductile Cast Iron FCD450	26	57.2
			0,97	140													
AGH29 - 10	Flanged JIS, ASME, DIN	½" - 2"	0,3	43	400	752	340 ½" - 1"	200	120	260	13.4 ½" - 1"	7.9	4.7	10.2	Cast Steel SCPH2	28,0* ½" - 1"	61.6* ½" - 1"
			1,0	145													
			2,0	290													
			2,9	420													
AGH29W - 20	Socket Weld ASME, DIN	½" - 1"	0,3	43	400	752	280	200	120	260	11.0	7.9	4.7	10.2	Cast Steel SCPH2	25,5	56.1
			1,0	145													
			2,0	290													
			2,9	420													
AGU29 - 16	Flanged JIS, ASME, DIN	½" - 2"	0,3	43	400	752	340 ½" - 1"	200	120	260	13.4 ½" - 1"	7.9	4.7	10.2	Stainless Steel SCS13A	28,0* ½" - 1"	61.6* ½" - 1"
			1,0	145													
			1,6	230													
			4,5	652													
AGU29W - 16	Socket Weld ASME, DIN	½" - 1"	0,3	43	400	752	280	200	120	260	11.0	7.9	4.7	10.2	Stainless Steel SCS13A	25,5	56.1
			1,0	145													
			1,6	230													
			4,5	652													

\* The weight may differ depending on the size and flange standard.